

# LOQATE

Global Location Intelligence



## Geocode

Geocoding is the process of translating a location to specific coordinates on a map based on other geographic data, such as street addresses, or zip codes (postal codes). With geographic coordinates, the location can be mapped and entered into Geographic Information Systems (GIS), Location Based Services (LBS) or the coordinates can be embedded into media such as digital photographs via geotagging.

The Geocode SDK enables a latitude-longitude coordinate to be added to any world address and enjoys superior market leading breadth and depth of data, with worldwide coverage to city or postal code centroid, and delivery point/rooftop level coverage for over 120 countries.

High granularity geocodes  
for worldwide addresses

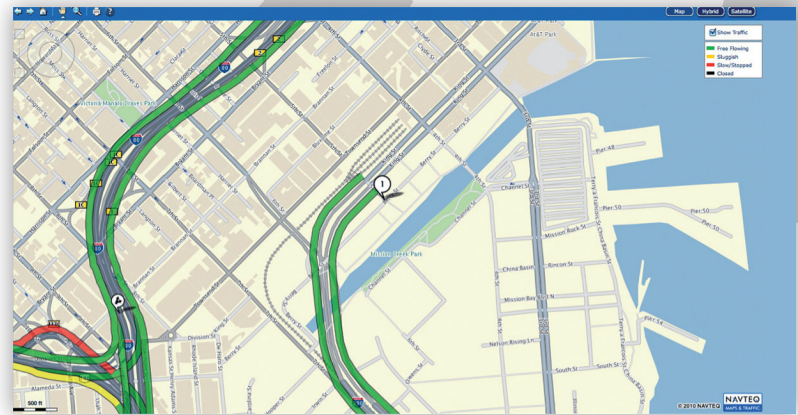
### INPUT DATA

300 Berry #1210 SF CA

### OUTPUT DATA

● Latitude 37.775837

● Longitude -122.39557



### Key Features & Benefits

- SDK available to run on Windows, Linux, UNIX 32/64-bit, or through the Loqate SaaS environment
- API's in C++, Java, .Net, PHP, JSON, SOAP, Atom
- Validates data against the extensive Loqate Global Knowledge Repository of worldwide reference data
- Improved geocoding through pre-cleansing of input data

○ FTI@freelancetech.com

○ Phone: 888-970-9944

www.freelancetech.com