

# PLANETPRESS. iWATCH

**Capture.. Design.. Operate..**  
PlanetPress iWatch & IBM iSeries  
work hand in hand

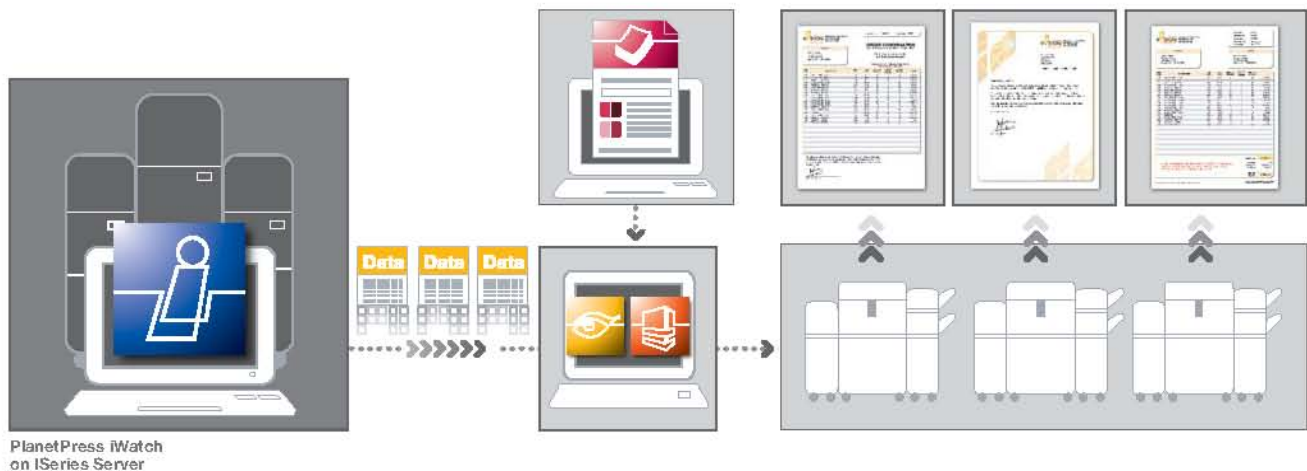
## For flexible creation and printing of variable content documents on the iSeries.

With PlanetPress iWatch, you can benefit from a whole new level of flexibility in the management of your document printing processes from your iSeries Server and AS400's. PlanetPress iWatch enables you to select the desired output and send your documents to any printers that are configured on your network. Whether you are printing invoices, checks or green bar reports, you now have the ability to control your documents output with a simple configuration of PlanetPress iWatch on your server and without modifying your existing application. It's as simple as that.

### Benefits

- No need for in between hardware: one less point of failure
- Easy to set up and manage PlanetPress Design documents on iSeries
- No need to modify existing application
- Store your PlanetPress Design documents on the iSeries

## Flexible Printing More Possibilities



**1** Capture a sample data file from the iSeries Server using the PlanetPress Design integrated tool.

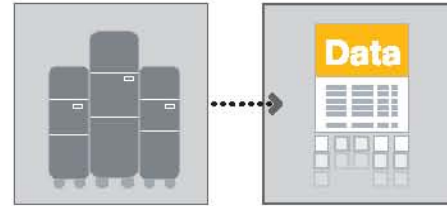
**2** Use PlanetPress Design to create your document and send it back to be stored on the iSeries Server via FTP.

**3** The iSeries Server operator automatically matches the data streams to the appropriate PlanetPress Design documents and routes them to printing devices or to PlanetPress Watch or PlanetPress Server.



## Process 1

Capture a sample spool data file from the ISeries Server\*. Using PlanetPress Design or PlanetPress Watch or PlanetPress Server, you will ensure that you are capturing the exact data as it would be sent to the printer.



## Process 2

Use PlanetPress Design to develop the desired output. The user friendly PlanetPress GUI is highly flexible, allowing for the design of simple to complex variable content documents.



## Process 3

Once the design is completed, use a one step process to send the document directly from PlanetPress Design to the ISeries Server via FTP. Alternatively, just the trigger can be sent to the host, and the PlanetPress document can be sent to the target printer's hard drive, Flash, or RAM. On the ISeries Server, one physical file contains all documents while another contains all triggers.



For times when the PlanetPress Design document needs to be sent to multiple printers, use the batch processing wizard to simultaneously send to multiple printers, to PlanetPress Watch or PlanetPress Server (for output management to remote printers, archive, email and fax), and to iWatch, running on the ISeries Server.

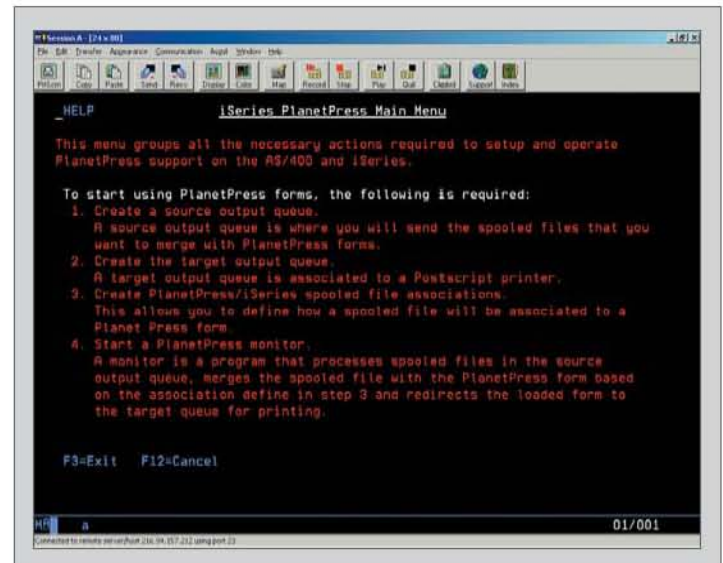
## Process 4

PlanetPress iWatch, running on the ISeries Server, requires three steps when initially setting up a new PlanetPress Design Document:

- Set Up the Source Output Queue
- Set Up the Target Output Queue
- Set Up PlanetPress iWatch Monitor to dynamically associate the source data and PlanetPress Design document.

## Day to Day Operation

*Now, to print data using a specific document, iSeries operators only need to select the appropriate Source Output Queue as the destination!*



\*These steps are performed using the PlanetPress iWatch interface, which was built to resemble the ISeries Server's current work environment to aid in a smooth transition.



**888.970.9944**  
**TODAY!**

**Freelance Technologies Inc.**  
sales@freelancetech.com  
www.freelancetech.com  
**540-949-7266**  
888.970.9944

